

Agua Seal

MONOSEAL MEMBRANE SYSTEM

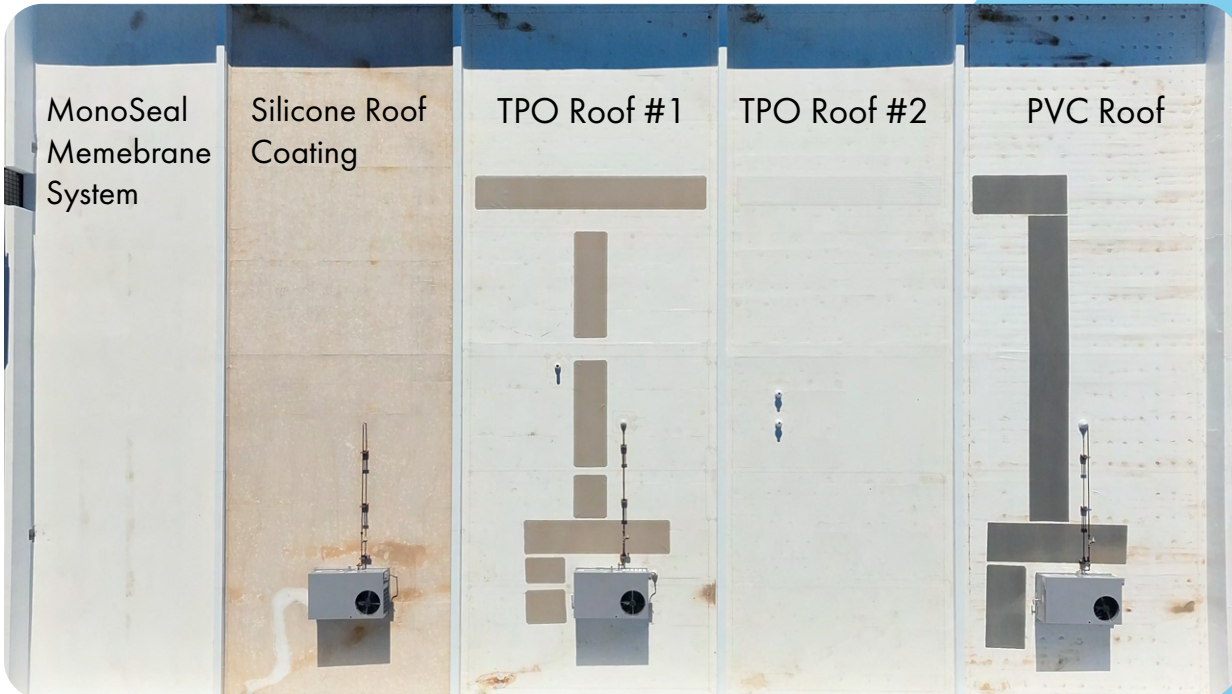
ONGOING STUDY

CSS' Mike Stivers Building: Rising Above the Rest

Sheridan, Arkansas

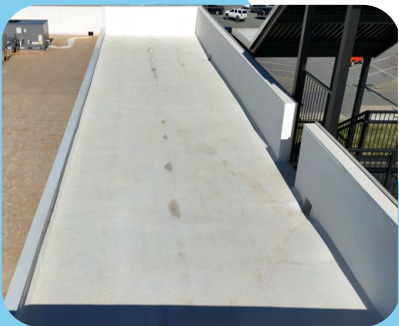
In December of 2024, Connect Service Solutions cut the ribbon on their brand new home office extension, the Mike Stivers Building.

- RoofConnect, a national roofing service provider, is at the center of Connect Service Solutions' family of businesses. As such, they wanted to take a different approach to the roof on their new facility.
- Opting to use their new roof as a tool to educate employees, visitors, and industry partners, RoofConnect had 5 different types of commercial roofs installed on top of the office.
- The five roof types are as follow from left to right (below):
 - Our acrylic MonoSeal Membrane System
 - One silicone coated roof
 - Two different types of TPO roofs at 60 mils
 - One PVC roof at 60 mils



ONGOING STUDY

MONOSEAL MEMBRANE SYSTEM



HOW MONOSEAL HOLDS UP

- In the 18 months following the completion of system installation, the MonoSeal Membrane System has performed at the same level, if not more effectively, than some of the popular commercial roof options like TPO.
- The system has maintained its watertight, monolithic (seamless, fully adhered) properties, preventing water intrusion to the facility.
- In the 18 months post install, the silicone roof has collected dirt and grime, reducing its white roof (reflective) and emissive properties.
- While TPO, PVC, and the MonoSeal system have all performed efficiently, the MonoSeal system is the only renewable system on this roof. New applications can be applied on top of the initial system, prolonging roof life and preventing the need for a full tear off.

INSTALLATION & SPECS

Liquid-Applied Reinforced Acrylic System (MonoSeal)

- Selected for its sustainable properties, streamlined installation process, compatibility with future recoating, as well as commercial rooftop solar installations.
- Applied over the designated first section of the roof.
- System components:
 - Two base coats with embedded non-woven polyester fabric
 - Two white top coats
 - Total mils dry minimum: 52 mils
- Designed to be solar ready with a 20-year renewable warranty.
- System benefits:
 - Watertight/Monolithic/Seamless/Fully Adhered
 - UV reflective
 - Soft and flexible
 - Minimal discoloration over time

MONOSEAL

MEMBRANE SYSTEM